

# Whitehall District Schools



Ron Bailey, Principal  
ronaldbailey@whitehallschools.net

Phone (231) 893-1040  
Fax (231) 894-9060

February 6, 2023

Dear Parents and Community Members:

We are pleased to present you with the Annual Education Report (AER) which provides key information on the 2021-22 educational progress for Ealy Elementary. The AER addresses the complex reporting information required by federal and state laws. The school's report contains information about student assessment, accountability, and teacher quality. If you have any questions about the AER, please contact the principal, Ronald Bailey for assistance.

The AER is available for you to review electronically by visiting the following web site <http://bit.ly/2PZUX2z>, or you may review a copy in the main office at your child's school.

For the 2021-22 school year, schools were identified based on previous years' performance using definitions and labels as required in the Every Student Succeeds Act (ESSA). A Targeted Support and Improvement (TSI) school is one that had at least one underperforming student subgroup in 2021-22. An Additional Targeted Support (ATS) school is one that had a student subgroup performing at the same level as the lowest 5% of all schools in the state in 2021-22. A Comprehensive Support and Improvement (CSI) school is one whose performance was in the lowest 5% of all schools in the state or had a graduation rate at or below 67% in 2021-22. Some schools are not identified with any of these labels. In these cases, no label is given. Ealy was not identified with one of these labels.

Ealy Elementary is a third grade through fifth grade school that provides students with engaging opportunities to experience learning in real-world applications. The statewide MSTEP was not given during the Spring of 2020 due to the pandemic. Data from the 2020-21 school year did show a decrease from the spring 2019 Reading and Math scores due to the many negative academic and social-emotional factors impacting our school programming. Even though we did see some scores decrease slightly, Ealy students remained at the top of the county wide ranking. Since the pandemic began we have worked to strengthen our multi-tiered systems of support to

address both academic and social-emotional needs of all students. In analyzing our local, district, and state data, the school improvement team has identified four areas as teaching and learning priorities:

1. Reading Instruction: Explicit instruction that encompasses the five big ideas of reading at all levels of student support with a common literacy plan.
2. Writing Instruction: Instruction based on benchmark proficiencies encompassing the three text types integrated with science and social studies.
3. Math Instruction: Instruction that focuses on the eight mathematical practices inside of a common math plan.
4. Classroom and School level behavioral strategies: Utilize a defined process to support all students based on non-academic skills to efficiently support socio-emotional development.

To improve in these areas, staff continues to participate in rigorous, multi-year job-embedded professional development with district level instructional coaches, as well as development of common k-12 Literacy and Math Plans.

### **PROCESS FOR ASSIGNING PUPILS TO THE SCHOOL**

Ealy Elementary School students are typically those who either reside within the District's boundaries, or attend through Schools of Choice. Given the building grade alignments with no overlapping grades, students attend the school that provides educational service for the respective age-grade level. If you are interested in Schools of Choice, you may contact Kirsten Bolles at 231-893- 1005.

### **THE STATUS OF THE 3-5 YEAR SCHOOL IMPROVEMENT PLAN**

In accordance with the Michigan Department of Education's framework for continuous improvement, the staff works together to conduct data-based needs assessments which identify strengths and weaknesses with the instructional program. From the needs assessments, goals and objectives are developed in a detailed plan that is carried out over the course of 3-5 years. The plans are revised and adjusted annually through the School Improvement process. Ealy Elementary is a school-wide Title I school.

### **A BRIEF DESCRIPTION OF EACH SPECIALIZED SCHOOL**

N/A

### **HOW TO ACCESS A COPY OF THE CORE CURRICULUM**

Ealy staff have worked extensively over the last two years to develop an integrated Literacy Plan and Math Plan. The plan is updated yearly based on new professional learning and system improvement. The Literacy Plan is based off of the Michigan Standards, which are available at the following website: <http://www.corestandards.org/>. You are welcome to inquire in our school office.

# Whitehall District Schools



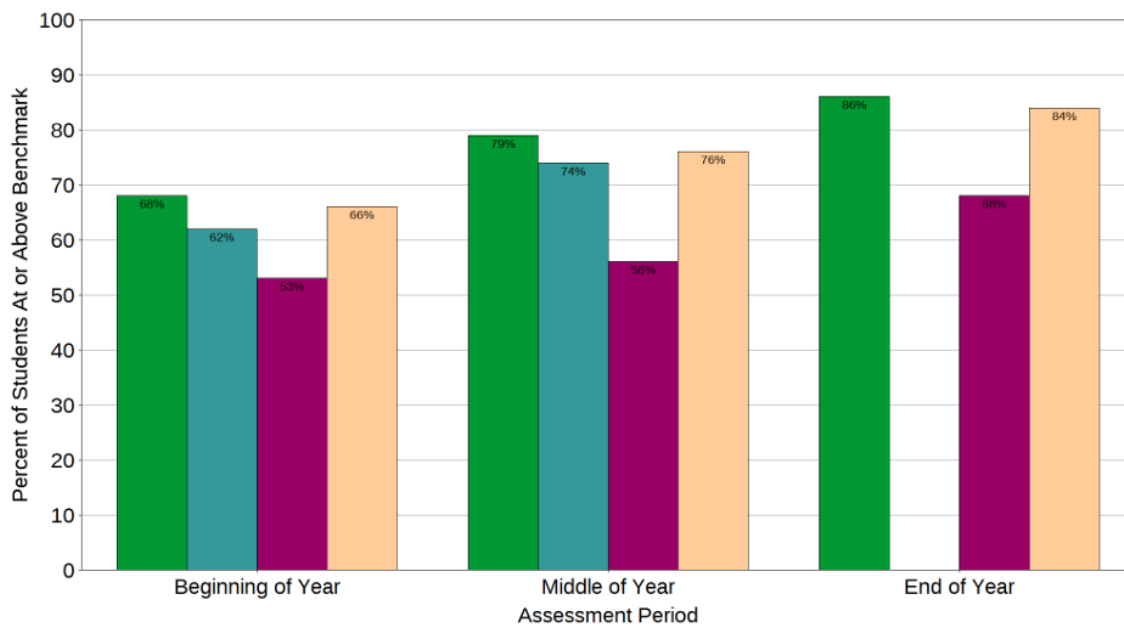
Ron Bailey, Principal  
ronaldbailey@whitehallschools.net

Phone (231) 893-1040  
Fax (231) 894-9060

## THE AGGREGATE STUDENT ACHIEVEMENT RESULTS FOR ANY LOCAL COMPETENCY TESTS OR NATIONALLY NORMED ACHIEVEMENT TESTS

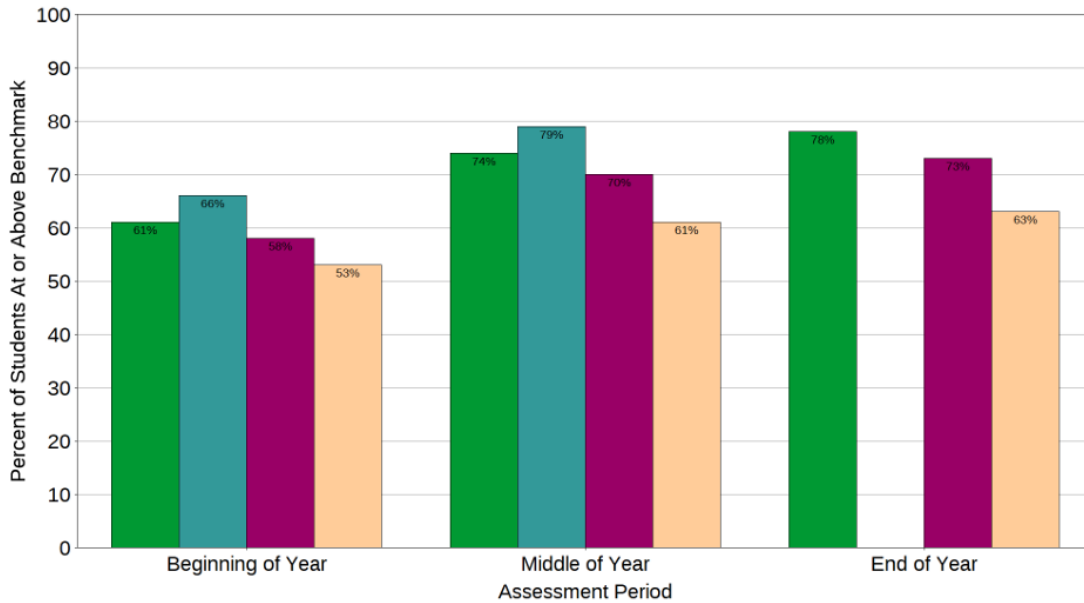
Third Grade Dynamic Indicators of Early Literacy Skills (DIBELS) Multi-Year Percent at Benchmark (2018/19-2021/22)

### Reading Composite Score



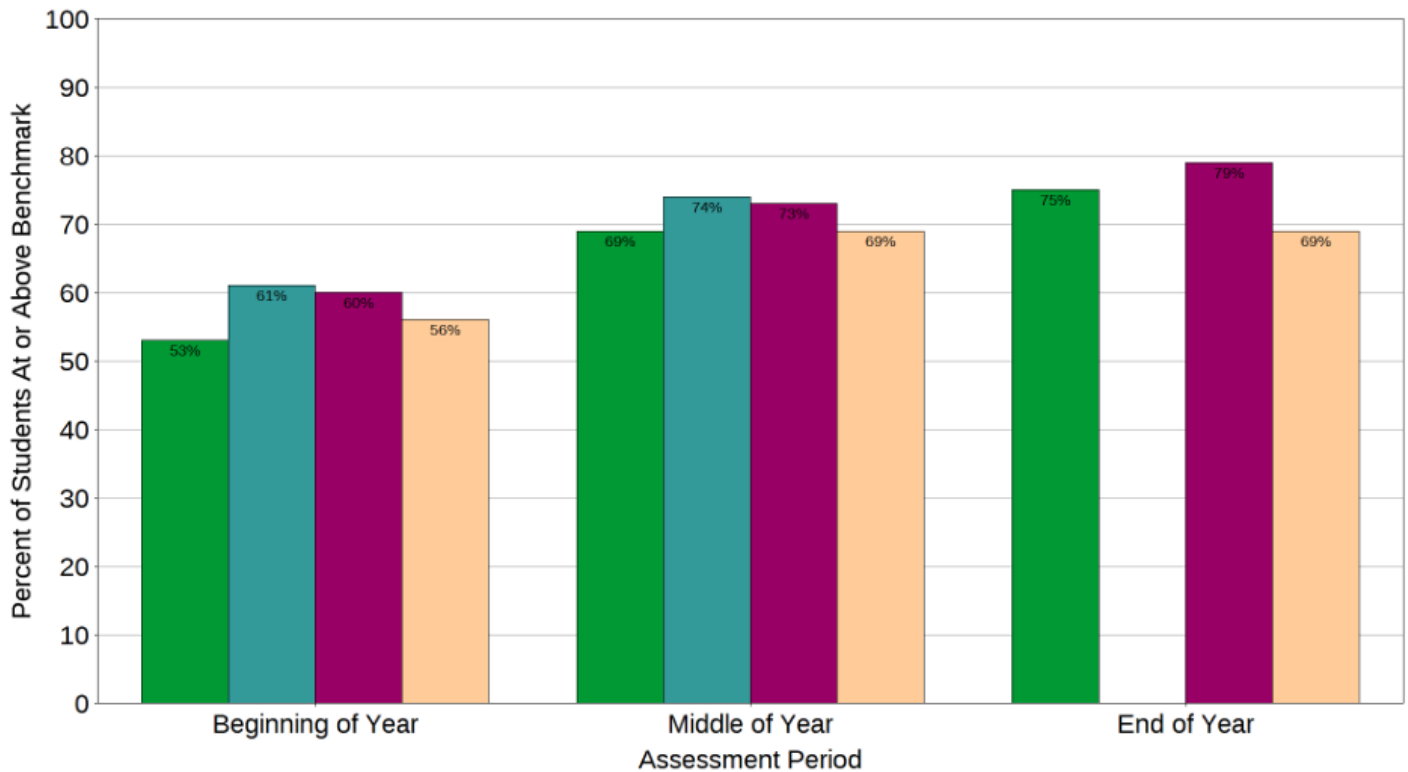
Fourth Grade Dynamic Indicators of Early Literacy Skills (DIBELS) Multi-Year Percent at Benchmark (2018/19-2020/21)

**Reading Composite Score**



Fifth Grade Dynamic Indicators of Early Literacy Skills (DIBELS) Multi-Year Percent at Benchmark (2018/19-2021/22)

**Reading Composite Score**



# Whitehall District Schools



Ron Bailey, Principal  
ronaldbailey@whitehallschools.net

Phone (231) 893-1040  
Fax (231) 894-9060

## IDENTIFY THE NUMBER AND PERCENT OF STUDENTS REPRESENTED BY PARENTS AT PARENT-TEACHER CONFERENCES

Conference Period	Total No. of Students	Total No. of Students Represented	Percentage
Spring 2019	427	401	94
Fall 2019	435	404	93
Spring 2020	427	401	94
Fall 2020	405	376	94
Spring 2021	401	368	92
Fall 2022	400	372	93

Ealy Elementary School is a great place to learn! We invite you to learn more about our school, and get involved. Quality education relies on a strong and enduring partnership between home and school. Parents and community members can stay up to date by visiting our website and reading the monthly newsletter. Please don't hesitate to contact me if I may be of assistance to you.

Sincerely,

A handwritten signature in black ink that reads "Ronald Bailey".

Ronald Bailey  
Ealy Elementary Principal